



Rhythm

Design by Arik Levy

VIBIA
LIGHT IS CREATION

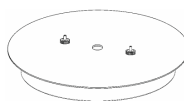
ASSEMBLY INSTRUCTIONS

SUPPLIED MATERIAL

1.



2.



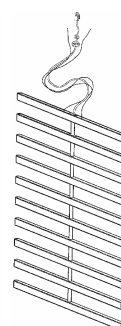
3.



4.



5.



	2140 to 2180
1 Instalation components bag	1 un.
2 Ceiling rose	1 un.
3 Components Bag	1 un.
4 Allen key	1 un.
5 Lamp structure	1 un.

TECHNICAL SPECIFICATIONS

2140.	Net Weight	5,4 Kg	10 x LED STRIP 30V 2,9W	⊕	IP20	cULus	F
2141.	Net Weight	7,4 Kg	20 x LED STRIP 30V 2,9W	⊕	IP20	cULus	F
2142.	Net Weight	10,2 Kg	30 x LED STRIP 30V 2,9W	⊕	IP20	cULus	F
2143.	Net Weight	13,3 Kg	40 x LED STRIP 30V 2,9W	⊕	IP20	cULus	F
2150.	Net Weight	7,8 Kg	10 x LED STRIP 30V 5,8W	⊕	IP20	cULus	F
2151.	Net Weight	9,7 Kg	20 x LED STRIP 30V 5,8W	⊕	IP20	cULus	F
2152.	Net Weight	12,2 Kg	30 x LED STRIP 30V 5,8W	⊕	IP20	cULus	F
2160.	Net Weight	6,6 Kg	5 x LED STRIP 30V 2,9W 5 x LED STRIP 30V 5,8W	⊕	IP20	cULus	F
2161.	Net Weight	8,55 Kg	10 x LED STRIP 30V 2,9W 10 x LED STRIP 30V 5,8W	⊕	IP20	cULus	F
2162.	Net Weight	11,2 Kg	15 x LED STRIP 30V 2,9W 15 x LED STRIP 30V 5,8W	⊕	IP20	cULus	F
2163.	Net Weight	14,5 Kg	20 x LED STRIP 30V 2,9W 20 x LED STRIP 30V 5,8W	⊕	IP20	cULus	F
2170.	Net Weight	5,4 Kg	10 x LED STRIP 30V 2,9W	⊕	IP20	cULus	F
2175.	Net Weight	7,8 Kg	10 x LED STRIP 30V 5,8W	⊕	IP20	cULus	F
2180.	Net Weight	6,6 Kg	5 x LED STRIP 30V 2,9W 5 x LED STRIP 30V 5,8W	⊕	IP20	cULus	F

- ⊕ Class I. Product with an additional protection cable (grounds).
- IP20 Product protected against solid object as big as or bigger than 12 mm. No protection against water.
- F Product that CAN be in contact with normally-flammable materials (wood or others).

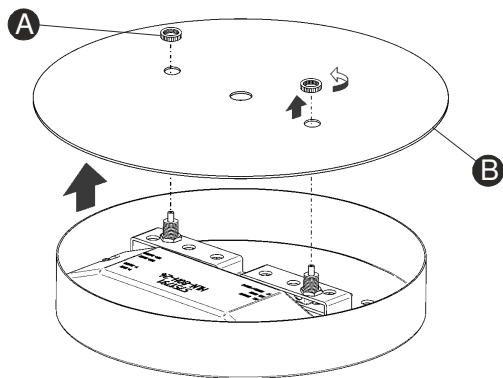
Caution

Before assembling and installing this product, carefully read the following:

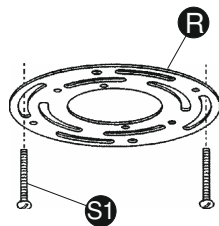
- Switch of the mains before installing the lamp.
- To install on the ceiling, always choose the most adequate fixing tools for the ceiling material.
- If the steel cable or the power cord of this lamp is damaged, it must be replaced only by the manufacturer or their technical service or by a person capacitated to this effect to avoid any risk.
- This lamp is for indoor use only, excluding bathrooms or any type of humid surface.
- Make sure your ceiling can support the weight of the lamp.
- We recommend reading the manual before installainga the lamp. Keep this instructions for future reference.
- At least two people are needed to install and desinstall the lamp.



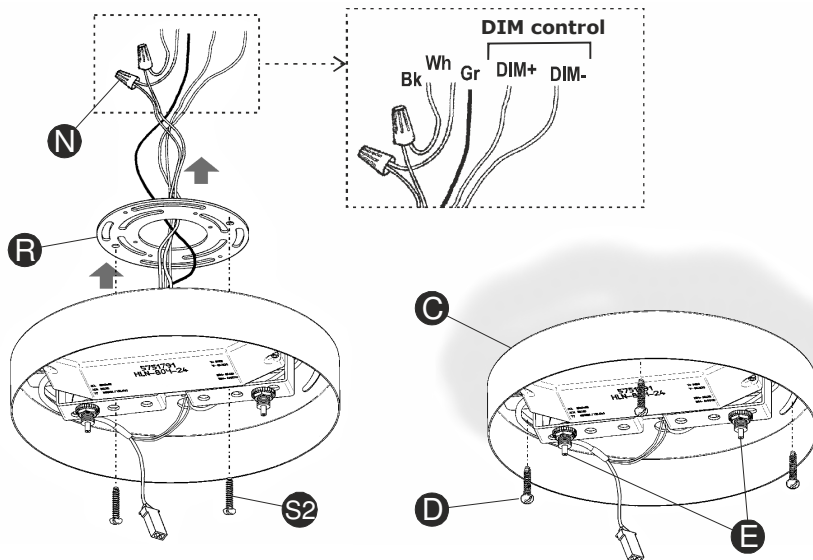
1



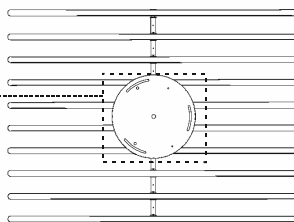
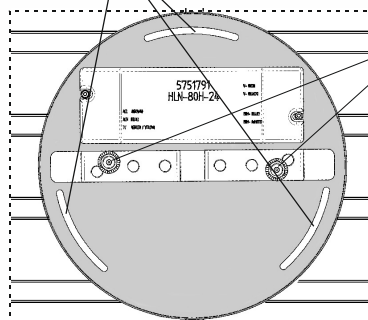
2



3



Slots



IMPORTANT NOTICE:

Caution: to avoid possible electrical shock, make certain electricity is shut off at main panel before wiring.

1. Unscrew the two nuts (A) securing the decorative disc (B).

2. Making certain that the threads of the cross bar screws are pointing away from the ceiling. Secure the round cross bar (R) to the junction box using the mounting screws (S1).

3. Connect the white fixture wire to the white wire of the supply circuit. Connect the black fixture wire to the black wire of the supply circuit. Secure with the wire nuts (N) and tape connections with electrical tape. Connect the fixture yellow and green ground wire and the supply green tinted ground wire to the ground screw on the round cross bar using the ground terminal.

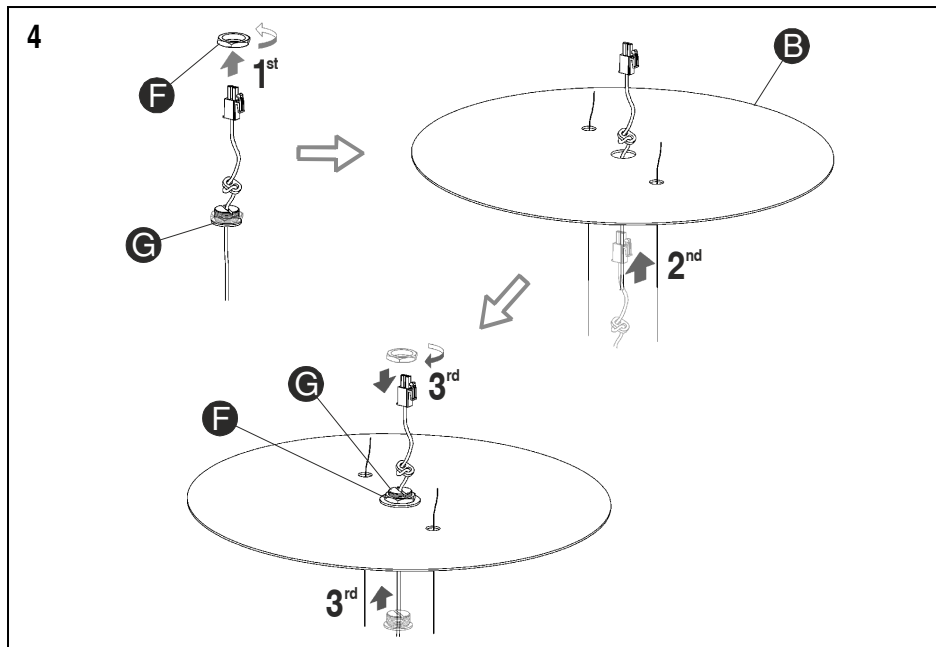
Connect your DIM control lines to poles DIMER+ and DIMER-.

Push the connections and all excess wire to the interior of the junction box.

Spread the electrical splices on the round cross bar (R) so that the black wires are on one side of the junction box and the white wires on the other.

Secure the plaque (C) to the round cross bar, using the cross bar screws (S2) and also fix it to the ceiling using the most adequate extra screws (D) (not supplied).

IMPORTANT: Mount the fitting so that the sticks are left at the desired angle. The position to hanging fittings (E) mark the direction of the stick. It has three slots so that once mounted and before the fixing screws are tightened it can be adjusted to face in the chosen direction.



4. Follow the steps shown to fit the end of the cable in the light fitting connector on the decorative disc (B), using the nut (F) and the cable clamp (G).

5. Insert each steel cable into its hanging fitting (E) and connect the terminals (H).

1 terminal for refs.: 2140, 2141, 2142, 2150, 2160, 2161, 2170, 2175 and 2180

2 terminals for refs.: 2143, 2151, 2152, 2162 and 2163

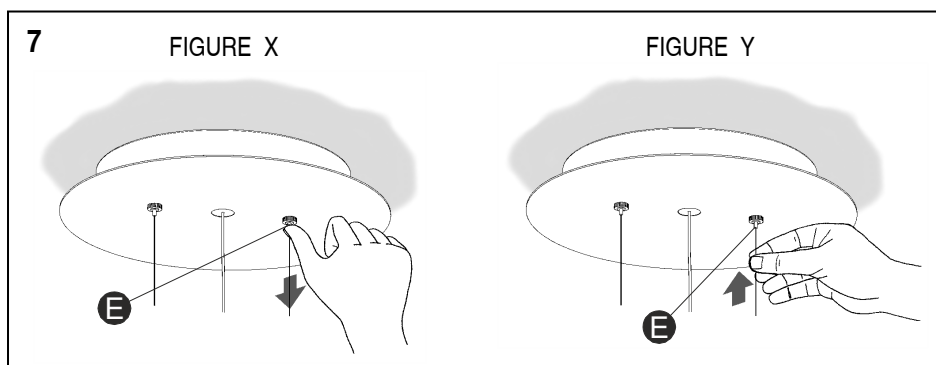
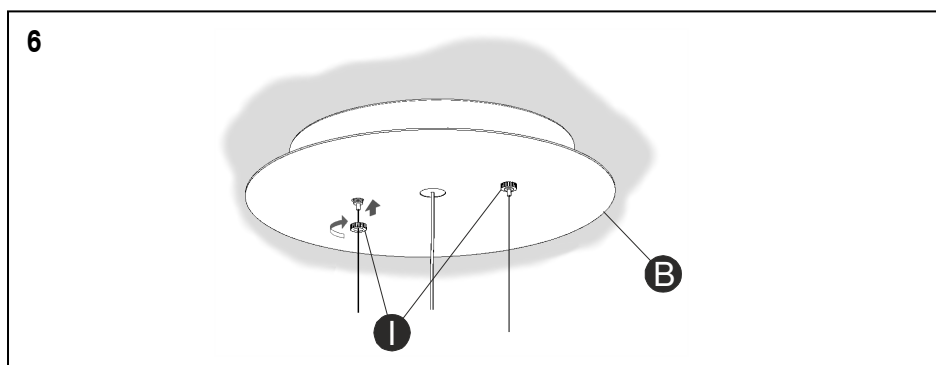
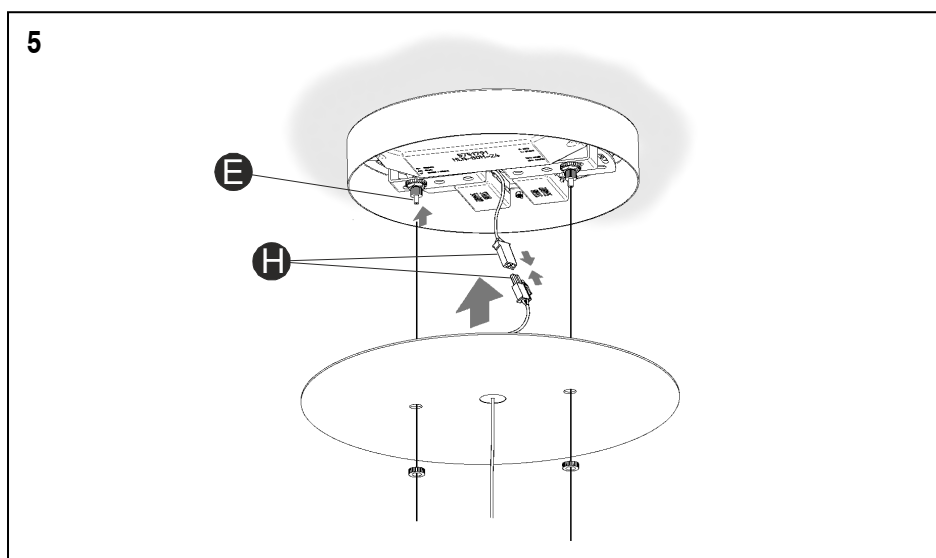
6. Fit the decorative disc (B) and secure it by turning the nuts (I) by hand, without using any tools.

7. The height of the light in the ceiling fitting can be adjusted using the two hanging fittings.

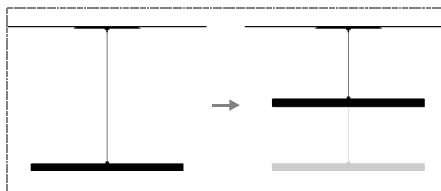
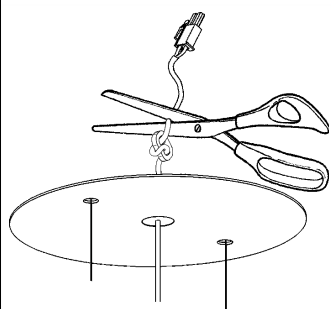
To lower it: Release the cable by pressing the hanging lug (E), keep the lug pressed in and set the light to the desired height (see figure X).

IMPORTANT: Hold the cable firmly with your free hand to stop the light dropping suddenly.

To raise it: There is no need to press the hanging lug (E); simply take the cable and push it up. The hanging fitting stops it moving down as the cable is pushed in (see figure Y).



8



If the light fitting is shortened, the resulting excess cable must be cut off in order to avoid damage to it due to overheating.

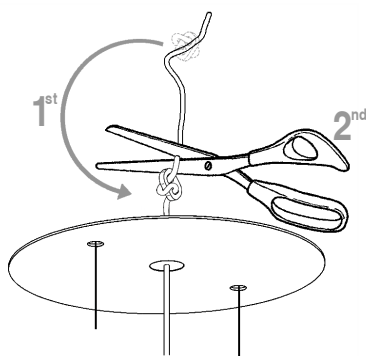
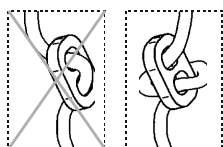
Follow the instructions as for steps 8 to 10.

8. After removing the decorative disc, cut the cable.

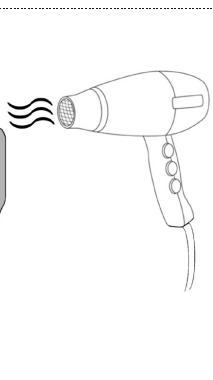
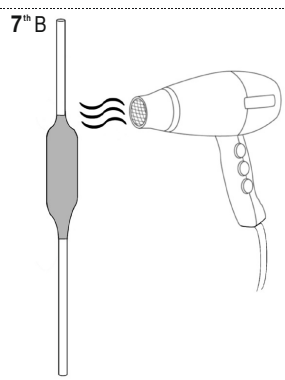
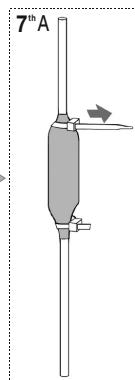
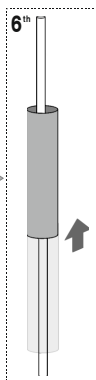
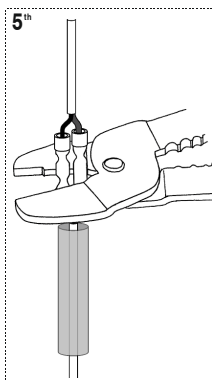
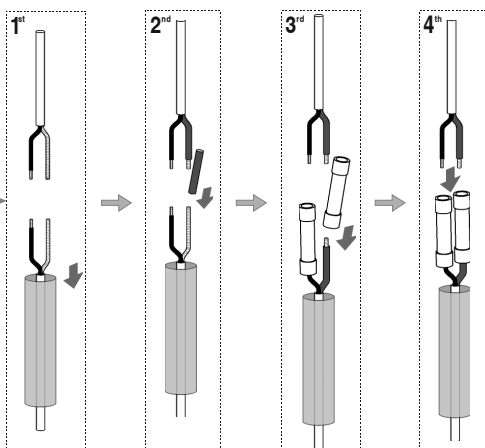
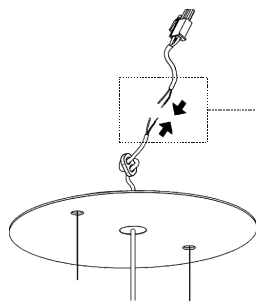
9. Slide the cable clamp to the desired height and cut off the excess cable.

10. Connect the length of cable in the connection terminal to the end of the cable fitted using the parts in the bag supplied.

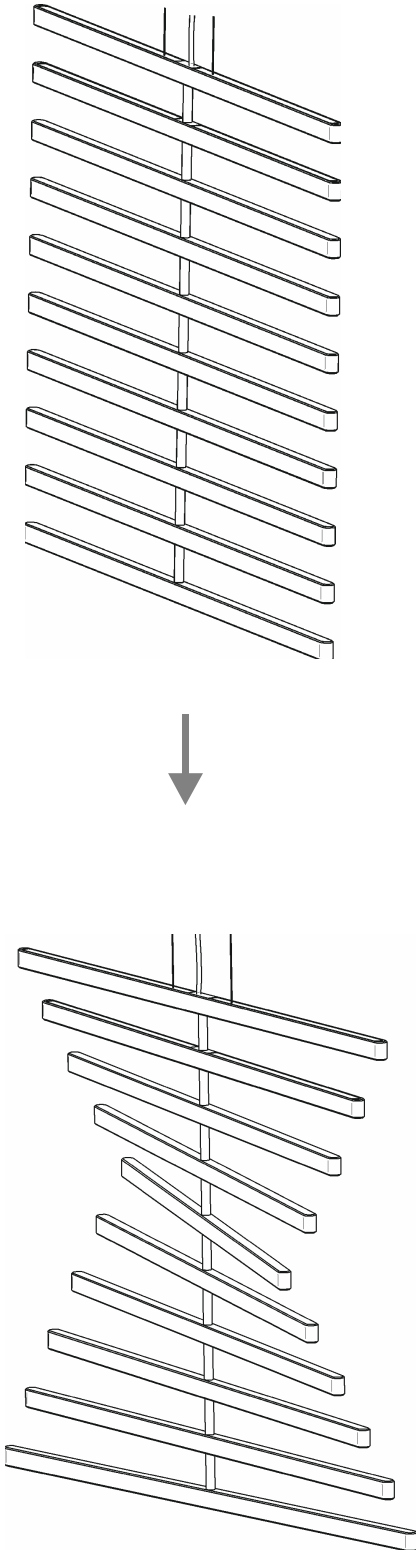
9



10



11



11. The sticks can be angled individually in either direction, up to a maximum of 90° , to form the desired composition, from smooth waves to chaotic shapes.

Maintenance

- Use a slightly-wet cotton cloth for cleaning.
- In case of malfunction or damage, please contact the retailer who sold the lamp.