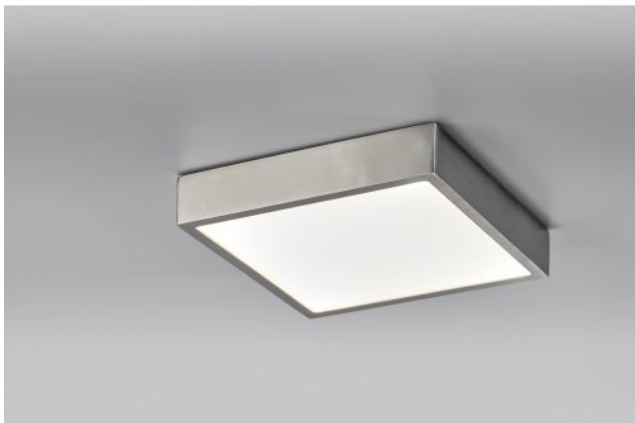


Lupia Licht


Venox MD



Oberfläche

- nickel
- black
- white

Technical details

Country of Manufacture	 Germany
Manufacturer	Lupia Licht
Protection class / IP rating	IP20
Contents of the package material	LED
dimming	acrylic glass, aluminum
Wattage	on site dimmable with a trailing edge dimmer
LED	24 W
Luminous flux in lm	inclusive
Color temperature in Kelvin	1,800
bulb exchange	3,000 warm white
Dimensions	at the manufacturer / at the factory
	H 4 cm B 23 cm L 23 cm

Description

The Lupia Licht Venox MD has a square shape with a length and width of 22.5 cm each. Its height is 4.3 cm. The light is emitted glare-free downwards from the LED ceiling light. The Venox MD is available in the surfaces black, white and matt nickel. A powerful LED with a colour temperature of 3,000 Kelvin warm white is included. The Venox MD is dimmable with a trailing edge phase dimmer.