



## Description

KNOT is a collection of stately pendant lights that appose two dramatically dissimilar materials. The design combines coarse natural fibre with smooth, transparent handblown glass to arouse a contrast as striking as it is dignified.

## Tech. description

The light comprises a glass shade, glass diffuser, metal component with LED module, and linen rope and is suspended from the ceiling canopy with a special bracket. The bottom section of the light is engineered as SELV.

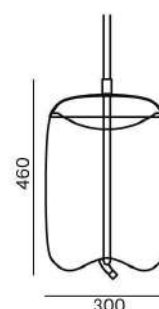


Colours options: [https://brokis.sharepoint.com/:b/s/brokis\\_sp/ET2XTCV0SOdMkM2d63qEJE4B4PYfERoQ8eD3k6zjGvj56g](https://brokis.sharepoint.com/:b/s/brokis_sp/ET2XTCV0SOdMkM2d63qEJE4B4PYfERoQ8eD3k6zjGvj56g)

## CONSTRUCTION SPECIFICATION

<b>Weight:</b>	7 kg
<b>Construction material:</b>	glass, metal, linen rope
<b>Cord length [mm]:</b>	Individual, max. 5,000 mm
<b>Mounting:</b>	Ceiling
<b>Environment:</b>	Indoor

## DIMENSIONS [mm]



## ELECTRICAL SPECIFICATION

<b>Input voltage [V]:</b>	100 - 240 V
<b>Frequency [Hz]:</b>	50-60 Hz
<b>Max. power [W]:</b>	8,9 W
<b>Coverage IP:</b>	20
<b>Socket:</b>	LED module
<b>Light source:</b>	-
<b>Energy class:</b>	E

## CERTIFICATIONS





### CM13436

Type	LED module
Lamp wattage [W]	8,9 W
Input voltage [V]	24 VDC
Energy class	E
Flux [lm]	1170 lm
Light colour [K]	2700 K
CRI	93
Dimmable	yes



### INNER FIXTURE

Dimensions O x w [mm]

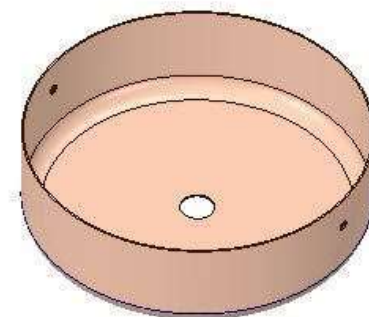
202 x 60 mm

Weight [kg]

1.15 kg

Material

metal



### Drawing

### Hole placement

