



## Description

KNOT is a collection of stately pendant lights that appose two dramatically dissimilar materials. The design combines coarse natural fibre with smooth, transparent handblown glass to arouse a contrast as striking as it is dignified.

## Tech. description

The light comprises a glass shade, glass diffuser, metal component with LED module, and linen rope and is suspended from the ceiling canopy with a special bracket. The bottom section of the light is engineered as SELV.

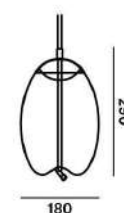


Colours options: [https://brokis.sharepoint.com/:b/s/brokis\\_sp/ETP5oCQ2b0VPlvMEsn5gIBT-gmiu4X8IyE4MTLsGRPDw](https://brokis.sharepoint.com/:b/s/brokis_sp/ETP5oCQ2b0VPlvMEsn5gIBT-gmiu4X8IyE4MTLsGRPDw)

## CONSTRUCTION SPECIFICATION

**Weight:** 3 kg  
**Construction material:** glass, metal, linen rope  
**Cord length [mm]:** Individual, max. 5,000 mm  
**Mounting:** Ceiling  
**Environment:** Indoor

## DIMENSIONS [mm]



## ELECTRICAL SPECIFICATION

**Input voltage [V]:** 100 - 240 V  
**Frequency [Hz]:** 50-60 Hz  
**Max. power [W]:** 3,4 W  
**Coverage IP:** 20  
**Socket:** LED module  
**Light source:** -  
**Energy class:** E

## CERTIFICATIONS





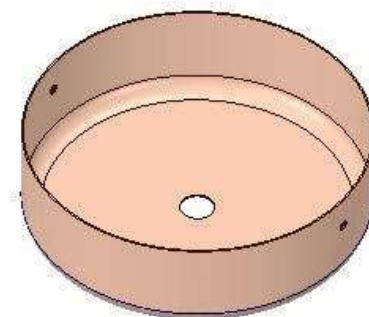
### CM13874

Type	LED module
Lamp wattage [W]	3,4 W
Input voltage [V]	24 VDC
Energy class	E
Flux [lm]	425 lm
Light colour [K]	2700 K
CRI	93
Dimmable	yes



### INNER FIXTURE

Dimensions O x w [mm]	202 x 60 mm
Weight [kg]	1.15 kg
Material	metal



### Drawing

### Hole placement

