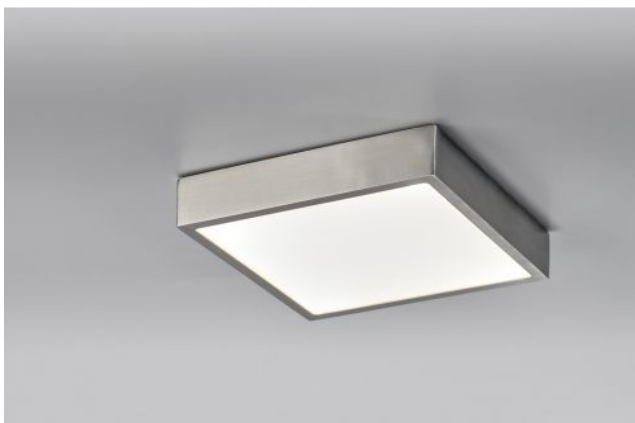


Lupia Licht


Venox MD



Oberfläche

- nickel
- noir
- blanc

Technical details

Pays de fabrication	 Allemagne
Fabricant	Lupia Licht
Indice de protection / Indice IP	IP20
Contenu de la livraison matériel	LED
atténuation	aluminium, verre acrylique
Puissance en Watt	dimmerable sur place avec commande gradateur de phase inverse
LED	24 W
Flux lumineux en lm	y compris
La température de couleur en Kelvin	1.800
remplacement des ampoules :	3.000 blanc chaud
Dimensions	chez le fabricant / a l'usine
	H 4 cm B 23 cm L 23 cm

Description

The Lupia Licht Venox MD has a square shape with a length and width of 22.5 cm each. Its height is 4.3 cm. The light is emitted glare-free downwards from the LED ceiling light. The Venox MD is available in the surfaces black, white and matt nickel. A powerful LED with a colour temperature of 3,000 Kelvin warm white is included. The Venox MD is dimmable with a trailing edge phase dimmer.