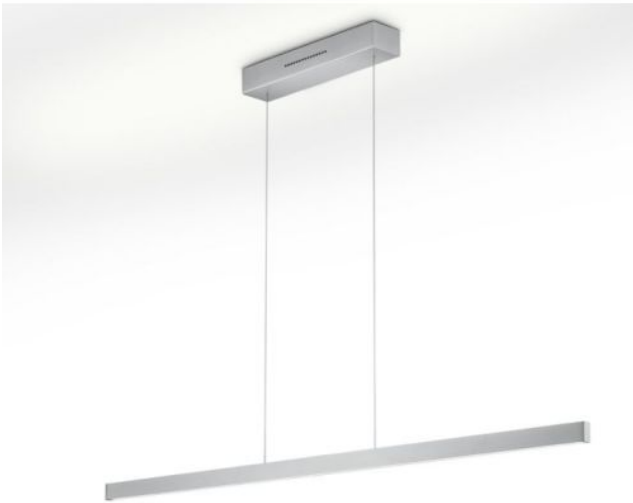


# Knapstein


## LINDA-72

### Oberfläche

- nickel
- bronze
- noir



## Technical details

|  |   |
|--|---|
| <b>Pays de fabrication</b>                     |  Allemagne |
| <b>Fabricant</b>                               | Knapstein   |
| <b>année</b>                                   | 2023  |
| <b>Matériel</b>                                | brass   |
| <b>réglage de la hauteur</b>                   | réglable en hauteur   |
| <b>Puissance en watts</b>                      | 34 W  |
| <b>LED #</b>                                   | inclus  |
| <b>Indice de rendu des couleurs (IRC / Ra)</b> | >90   |
| <b>Flux lumineux en lm</b>                     | 4004  |
| <b>Température de couleur en kelvins</b>       | 2.200-3.000   |
| <b>Indice de protection / Indice IP</b>        | IP20  |
| <b>Contenu de la livraison</b>                 | LED   |
| <b>atténuation</b>                             | controle gestuel  |
| <b>remplacement des ampoules :</b>             | chez le fabricant / a l'usine   |
| <b>hauteur totale</b>                          | 73 - 180 cm   |
| <b>Dimensions</b>                              | L 72 cm   |

## Description

The Knapstein LINDA-72 pendant lamp has a length of 72 cm. By pulling or lifting the lamp itself, the total height of the lamp can be adjusted between 73 cm and 180 cm. The lamp can also be suspended at an angle. The pendant lamp emits its light simultaneously upwards and downwards. The uplight and downlight can be switched and dimmed separately by gesture control. The light colour can also be adjusted separately for the uplight and downlight to a warmer tone (from a colour temperature of 3,000 Kelvin warm white to 2,200 Kelvin extra warm white). All dimming and light colour settings are saved via the memory function and are automatically reset when the light is next switched on.

The sensor area for gesture control is located centrally on the lamp. The lamp is switched on or off by a wiping movement of the hand in the sensor area. To change the light intensity, the hand is held longer in the sensor area. The desired light colour can then be set by holding the hand in the sensor area again for a longer time. The LINDA-72 is available in different surfaces. There are no visible screws in the ceiling canopy, because of a magnetic holder.