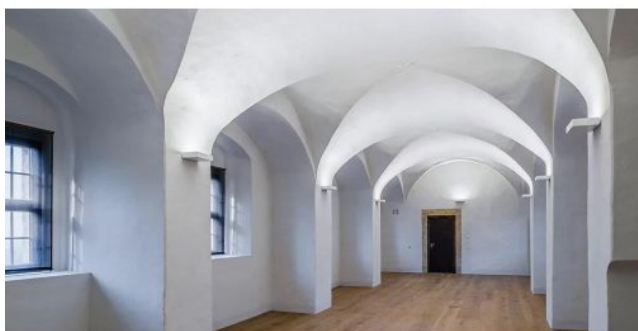


Steng

Big Brigg 1 LED



Oberfläche

- aluminium
- wit

Dimmbaarheid

- dimbaar met fase- en fase-afsnijding en fase-regelingsdimmer
- met Casambi module

Farbtemperatur in Kelvin

- 2.700 extra warm wit
- 3.000 warm wit

Technical details

Land van herkomst	 Duitsland
Fabrikant	Steng
Ontwerper	Peter Steng
Ontwerper 2	Andreas Steng
Beschermingsklasse / IP-bescherming	IP20
Leveringsomvang	LED
Diepte in cm	30
materiaal	aluminium
Wattage	20 W
LED	inclusief
Kleurweergave-index	>90
Lichtstroom in lm	2.960
Dimensions	H 6 cm B 20 cm

Omschrijving

The Steng Big Brigg 1 LED is a wall lamp with a width of 20 cm and a height of 6 cm. Its depth is 30 cm. The light from this lamp is emitted upwards and thus also into the room. Part of the light is emitted onto the wall behind the lamp and reflected from there into the room. The high-quality reflector technology enables glare-free light emission.

An LED with very good colour rendering and a high colour rendering index of Ra >90 is integrated as the light source. Depending on the version, the LED has an output of 20 or 23 watts. The Big Brigg 1 is offered in the surfaces aluminum and white matt. All surfaces have a fine structure. Other RAL colours are also available on request.

The wall lamp is offered in two versions: dimmable on site with a trailing edge and / or leading edge phase dimmer or with an integrated Casambi module. With a Casambi module, the lamp can be operated by smartphone or tablet using the Casambi app via Bluetooth. Casambi technology also offers the option of switching and dimming several suitable lamps separately in groups or switching the lamp at specific times via a timer. On request, the lamp is also available with 1-10 volt and DALI dimmable.

The Big Brigg 1 is offered with a colour temperature of 2,700 Kelvin extra warm white or 3,000 Kelvin warm white. On request, the lamp is also offered with Dim-to-warm technology. With the Dim-to-warm function, the light colour of the LED changes to a warmer tone when dimmed (from 3,000 Kelvin warm white to 1,800 Kelvin extra warm white). The two lights with 2,700 or 3,000 Kelvin each have an LED with an output of 20 watts and a colour rendering index of Ra >90, the light with Dim-to-warm technology has an output of 23 watts and a colour rendering index of Ra 95.